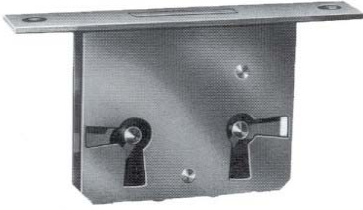


# Serrature per mobile

## ART.12 serratura ad infilare



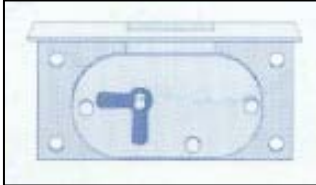
| ART.     | Entrata foro Chiave mm. | Piastra frontale mm. | Dim.scatola mm. |      | Finitura |
|----------|-------------------------|----------------------|-----------------|------|----------|
|          |                         |                      | Prof.           | Alt. |          |
| SE1220OT | 20                      | Bordo tondo          | 35              | 49   | Ottone   |
| SE1225OT | 25                      | Bordo tondo          | 40              | 49   | Ottone   |
| SE1230OT | 30                      | Bordo tondo          | 45              | 49   | Ottone   |
| SE1235OT | 35                      | Bordo tondo          | 50              | 49   | Ottone   |
| SE1250OT | 50                      | Bordo quadro         | 65              | 49   | Ottone   |
| SE1260OT | 60                      | Bordo quadro         | 75              | 49   | Ottone   |
| SE1270OT | 70                      | Bordo quadro         | 85              | 49   | Ottone   |
| SE1280OT | 80                      | Bordo quadro         | 95              | 49   | Ottone   |

## ART.13 serratura ad infilare



| ART.     | Entrata foro Chiave mm. | Piastra frontale mm. | Scasso mm. |      | Finitura |
|----------|-------------------------|----------------------|------------|------|----------|
|          |                         |                      | Prof.      | Alt. |          |
| SE1330OT | 30                      | Bordo tondo          | 47         | 36   | Ottone   |

## ART.19 serrature ad infilare



| ART.     | Entrata foro Chiave mm. | Piastra frontale mm. | Scasso mm. |      | Finitura |
|----------|-------------------------|----------------------|------------|------|----------|
|          |                         |                      | Prof.      | Alt. |          |
| SE1930OT | 30                      | 16x70                | 48         | 70   | Ottone   |
| SE1940OT | 40                      | 16x70                | 58         | 70   | Ottone   |

## ART.20 serrature ad infilare



| ART.        | Entrata foro Chiave mm. | Finitura |
|-------------|-------------------------|----------|
| SE20BIS30OT | 30                      | Ottone   |

# Serrature per mobile

## ART.MPE Perfect Serrature da incasso per mobili



Specificare mano DX o SX

| ART.     | Entrata Cil.<br>mm        | Dim.Scatola<br>Prof.x Alt. | Finitura |
|----------|---------------------------|----------------------------|----------|
| SEPE15OT | 15                        | 29x35                      | Ottonata |
| SEPE20OT | 20                        | 34x35                      | Ottonata |
| SEPE25OT | 25                        | 39x35                      | Ottonata |
| SEPE30OT | 30                        | 44x35                      | Ottonata |
| SEPE35OT | 35                        | 49x35                      | Ottonata |
| SEPE40OT | 40                        | 54x35                      | Ottonata |
| CO802TOT | Contropiastra bordo tondo |                            | Ottonata |

## ART.M32 Serrature da incasso per mobili



| ART.     | Entrata Cil.<br>mm         | Dim.Scatola<br>Prof.x Alt. | Finitura |
|----------|----------------------------|----------------------------|----------|
| SE3220OT | 20                         | 33x50                      | Ferro    |
| SE3225OT | 25                         | 38x50                      | Ferro    |
| SE3230OT | 30                         | 43x50                      | Ferro    |
| SE3235OT | 35                         | 49x50                      | Ferro    |
| SE3240OT | 40                         | 57x50                      | Ferro    |
| CO800QOT | Contropiastra bordo quadro |                            | Ottonata |

## ART.M42 Serrature da incasso per mobili



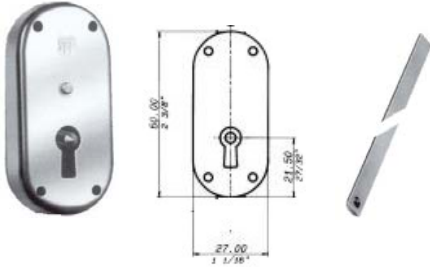
| ART.     | Entrata Cil.<br>mm | Dim.Scatola<br>Prof.x Alt. | Finitura |
|----------|--------------------|----------------------------|----------|
| SE4220FE | 20                 | 38x49                      | Ferro    |
| SE4225FE | 25                 | 43x49                      | Ferro    |
| SE4230FE | 30                 | 47x49                      | Ferro    |
| SE4240FE | 40                 | 57x49                      | Ferro    |
| SE4250FE | 50                 | 67x49                      | Ferro    |

## ART.72110 Cisa serrature da incasso per mobili



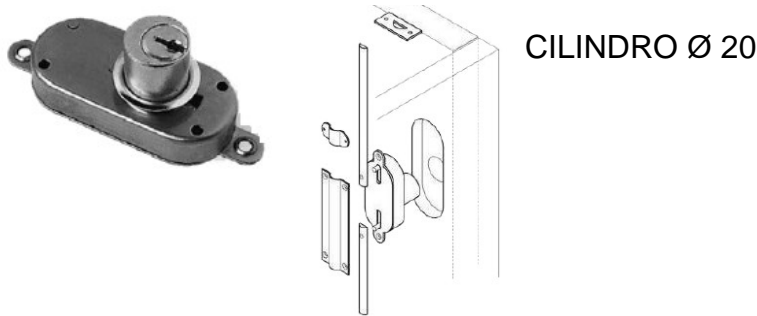
| ART.    | Entrata Cil.<br>mm | Ø Cil.<br>mm | Dim. scatola | Finitura |
|---------|--------------------|--------------|--------------|----------|
| SE72110 | 25                 | 20           | 47x60        | Ottonata |
| SE72110 | 35                 | 20           | 57x60        | Ottonata |
| SE72110 | 40                 | 20           | 62x60        | Ottonata |
| SE72110 | 45                 | 20           | 67x60        | Ottonata |
| SE72110 | 50                 | 20           | 72x60        | Ottonata |

## ART.67 BIS serrature da applicare



| ART.    | Scasso mm. |       |
|---------|------------|-------|
|         | Prof.      | HxL   |
| SE67FE  | 13         | 60x27 |
| AS140FE | H.140 mm   |       |

## ART.2267 serrature da applicare



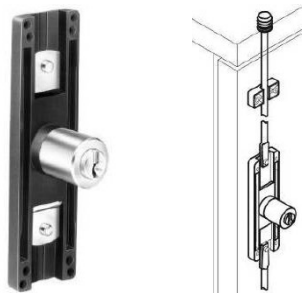
| ART.    | Scasso mm. |       |
|---------|------------|-------|
|         | Prof.      | HxL   |
| SE67FE  | 13         | 60x27 |
| AS140FE | H.140 mm   |       |

## ART.26 C serrature da applicare ottonata



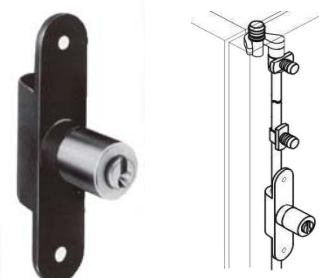
| ART.        | Scasso mm. |       |
|-------------|------------|-------|
|             | Prof.      | HxL   |
| SE26CFE20OT | 13         | 90x27 |

## ART.2171 serrature da applicare nichelata



| ART.         | Ø Cil | Scatola |
|--------------|-------|---------|
|              |       | H x L   |
| SE2171CO20NI | 16.50 | 60x26   |

## ART.2177 serrature da applicare nichelata



| ART.         | Ø Cil | Scatola |
|--------------|-------|---------|
|              |       | H x L   |
| SE2177CO20NI | 16.50 | 82x18.5 |

# Serrature per mobile

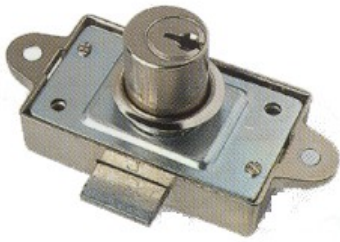
## ART.223N serratura da applicare



Serratura da applicare a tre chiusure con aste rotanti

| ART.     | Misura scatola | Finitura  |
|----------|----------------|-----------|
| SE223NOT | H.54 x L.32    | Ottonata  |
| SE223NNI | H.54 x L.32    | Nichelata |
| SE223NBR | H.54 x L.32    | Bronzata  |

## ART.223C serratura da applicare con cilindro



Serratura da applicare a tre chiusure a cilindro con aste rotanti

KD = Chiave diversa  
KA = Chiave uguale

| ART.             | Misura scatola | Finitura  | Diametro Cilindro | Lunghezza Cilindro | Chiave |
|------------------|----------------|-----------|-------------------|--------------------|--------|
| SE223COT 20 OT   | H.54 x L.32    | Ottonata  | 17                | 20                 | KD     |
| SE223COT 25 OT   | H.54 x L.32    | Ottonata  | 17                | 25                 | KD     |
| SE223COT 30 OT   | H.54 x L.32    | Ottonata  | 17                | 30                 | KD     |
| SE223COT 35 OT   | H.54 x L.32    | Ottonata  | 17                | 35                 | KD     |
| SE223COT 20 OT K | H.54 x L.32    | Ottonata  | 17                | 20                 | KA     |
| SE223COT 25 OT K | H.54 x L.32    | Ottonata  | 17                | 25                 | KA     |
| SE223COT 30 OT K | H.54 x L.32    | Ottonata  | 17                | 30                 | KA     |
| SE223COT 35 OT K | H.54 x L.32    | Ottonata  | 17                | 35                 | KA     |
| SE223CNI 20 NI   | H.54 x L.32    | Nichelata | 17                | 20                 | KD     |
| SE223CNI 25 NI   | H.54 x L.32    | Nichelata | 17                | 25                 | KD     |
| SE223CNI 30 NI   | H.54 x L.32    | Nichelata | 17                | 30                 | KD     |
| SE223CNI 35 NI   | H.54 x L.32    | Nichelata | 17                | 35                 | KD     |
| SE223CNI 20 NI K | H.54 x L.32    | Nichelata | 17                | 20                 | KA     |
| SE223CNI 25 NI K | H.54 x L.32    | Nichelata | 17                | 25                 | KA     |
| SE223CNI 30 NI K | H.54 x L.32    | Nichelata | 17                | 30                 | KA     |
| SE223CNI 35 NI K | H.54 x L.32    | Nichelata | 17                | 35                 | KA     |
| SE223CBR 20 K    | H.54 x L.32    | Bronzata  | 17                | 20                 | KA     |
| SE223CBR 25 K    | H.54 x L.32    | Bronzata  | 17                | 25                 | KA     |

## Aste per serrature 223N e 223C



## Accessori 223



| ART.     | Altezza cm. | Finitura  |               |
|----------|-------------|-----------|---------------|
| AC223 OT | ---         | Ottonata  | Kit Accessori |
| AC223 NI | ---         | Nichelata | Kit Accessori |
| AC223 BR | ---         | Bronzata  | Kit Accessori |
| AS100 OT | 100         | Ottonata  | Asta          |
| AS130 OT | 130         | Ottonata  | “             |
| AS160 OT | 160         | Ottonata  | “             |
| AS100 NI | 100         | Nichelata | “             |
| AS130 NI | 130         | Nichelata | “             |
| AS160 NI | 160         | Nichelata | “             |
| AS200 NI | 200         | Nichelata | “             |
| AS100 BR | 100         | Bronzata  | “             |
| AS130 BR | 130         | Bronzata  | “             |
| AS160 BR | 160         | Bronzata  | “             |
| AS200 BR | 200         | Bronzata  | “             |

# Serrature per mobile

## ART. 1 S/C Serratura per cassetti



KD = Chiave diversa  
 KA = Chiave uguale

| ART.         | Ø foro<br>cil.mm | Lungh.<br>cilindro | Chiave | Finiture  |           |
|--------------|------------------|--------------------|--------|-----------|-----------|
|              |                  |                    |        | Scatola   | Cilindro  |
| SE1SCNI20NI  | 17               | 20                 | KD     | Nichelata | Nichelata |
| SE1SCNI20NIK | 17               | 20                 | KA     | Nichelata | Nichelata |
| SE1SCNI25NI  | 17               | 25                 | KD     | Nichelata | Nichelata |
| SE1SCNI25NIK | 17               | 25                 | KA     | Nichelata | Nichelata |
| SE1SCNI30NI  | 17               | 30                 | KD     | Nichelata | Nichelata |
| SE1SCNI30NIK | 17               | 30                 | KA     | Nichelata | Nichelata |
| SE1SCNI35NI  | 17               | 35                 | KD     | Nichelata | Nichelata |
| SE1SCNI35NIK | 17               | 35                 | KA     | Nichelata | Nichelata |
| SE1SCOT20OT  | 17               | 20                 | KD     | Ottone    | Ottone    |
| SE1SCOT20OTK | 17               | 20                 | KA     | Ottone    | Ottone    |
| SE1SCOT25OT  | 17               | 25                 | KD     | Ottone    | Ottone    |
| SE1SCOT25OTK | 17               | 25                 | KA     | Ottone    | Ottone    |
| SE1SCOT30OT  | 17               | 30                 | KD     | Ottone    | Ottone    |
| SE1SCOT30OTK | 17               | 30                 | KA     | Ottone    | Ottone    |
| SE1SCOT35OT  | 17               | 35                 | KD     | Ottone    | Ottone    |
| SE1SCOT35OTK | 17               | 35                 | KA     | Ottone    | Ottone    |

## ART. 1 S/A Serratura per antine



KD = Chiave diversa  
 KA = Chiave uguale

| ART.         | Ø foro<br>cil.mm | Lungh.<br>cilindro | Chiave | Finiture  |           |
|--------------|------------------|--------------------|--------|-----------|-----------|
|              |                  |                    |        | Scatola   | Cilindro  |
| SE1SANI20NI  | 17               | 20                 | KD     | Nichelata | Nichelata |
| SE1SANI20NIK | 17               | 20                 | KA     | Nichelata | Nichelata |
| SE1SANI25NI  | 17               | 25                 | KD     | Nichelata | Nichelata |
| SE1SANI25NIK | 17               | 25                 | KA     | Nichelata | Nichelata |
| SE1SANI30NI  | 17               | 30                 | KD     | Nichelata | Nichelata |
| SE1SANI30NIK | 17               | 30                 | KA     | Nichelata | Nichelata |
| SE1SAOT20OT  | 17               | 20                 | KD     | Ottone    | Ottone    |
| SE1SAOT20OTK | 17               | 20                 | KA     | Ottone    | Ottone    |
| SE1SAOT25OT  | 17               | 25                 | KD     | Ottone    | Ottone    |
| SE1SAOT25OTK | 17               | 25                 | KA     | Ottone    | Ottone    |
| SE1SAOT30OT  | 17               | 30                 | KD     | Ottone    | Ottone    |
| SE1SAOT30OTK | 17               | 30                 | KA     | Ottone    | Ottone    |



# Serrature per mobile

## ART.2130 serrature per cassetti



KD = Chiave diversa  
KA = Chiave uguale

| ART.          | Ø foro cil.<br>mm | Lungh.<br>cilindro | Chiave | Finiture |           |
|---------------|-------------------|--------------------|--------|----------|-----------|
|               |                   |                    |        | Scatola  | Cilindro  |
| SE2130CO16NIK | 16                | 16                 | KA     | Nera     | Nichelata |
| SE2130CO20NI  | 16                | 20                 | KD     | Nera     | Nichelata |
| SE2130CO20NIK | 16                | 20                 | KA     | Nera     | Nichelata |
| SE2130CO25NI  | 16                | 25                 | KD     | Nera     | Nichelata |
| SE2130CO25NIK | 16                | 25                 | KA     | Nera     | Nichelata |
| SE2130CO30NI  | 16                | 30                 | KD     | Nera     | Nichelata |
| SE2130CO30NIK | 16                | 30                 | KA     | Nera     | Nichelata |
| SE213020ZNI   | 16<br>ZANCATA     | 20                 | KD     | Nera     | Nichelata |
| SE2130Z20NIK  | 16<br>ZANCATA     | 20                 | KA     | Nera     | Nichelata |

## ART.2131 serrature per antina

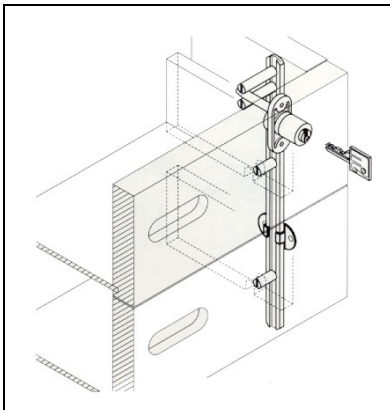


| ART.          | Ø foro cil.<br>mm | Lungh.<br>cilindro | Chiave | Finiture |           |
|---------------|-------------------|--------------------|--------|----------|-----------|
|               |                   |                    |        | Scatola  | Cilindro  |
| SE2131CO16NIK | 16                | 16                 | KA     | Nera     | Nichelata |

## ART.175V serrature per cassettiere chiusura multipla

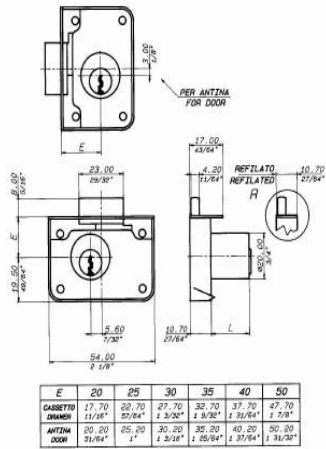
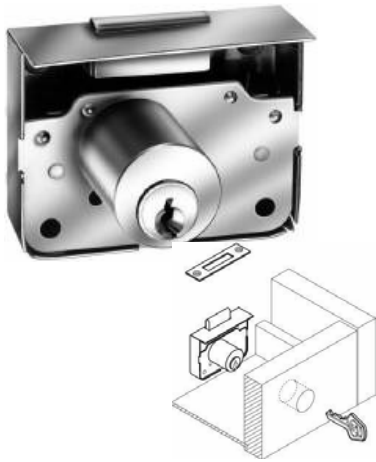


| ART.       | Ø foro cil.<br>mm | Chiave | Finitura  | Accessori     |
|------------|-------------------|--------|-----------|---------------|
| SE17520NI  | 20                | KD     | Nichelato | ---           |
| SE17520NIK | 20                | KA     | Nichelato | ---           |
| AS175NI    | ----              | ----   | Nichelato | Kit aste      |
| AC175NI    | ----              | ----   | Nichelato | Kit accessori |



# Serrature per mobile

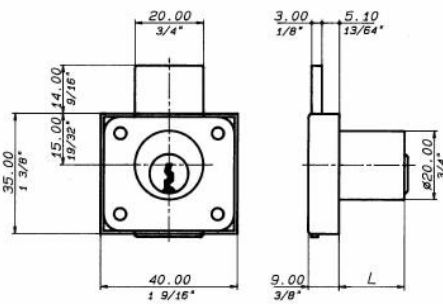
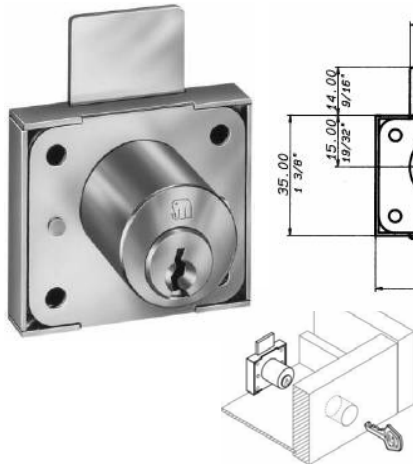
## ART.2203 serratura per ante da applicare



| ART. | Entrata cilindro mm. | Finitura | Conf.PZ |
|------|----------------------|----------|---------|
| 2203 | 30                   | Ottonate | 1       |
| 2203 | 40                   | Ottonate | 1       |
| 2203 | 50                   | Ottonate | 1       |

Cilindro ottonato; cassa in ferro

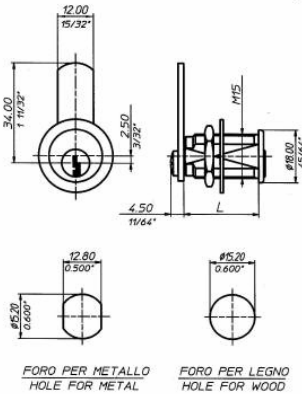
## ART.2241 serratura per ante da applicare



| ART. | Diametro cilindro mm. | Finitura | Conf.PZ |
|------|-----------------------|----------|---------|
| 2241 | 20                    | Nichel   | 1       |

# Serrature per mobile

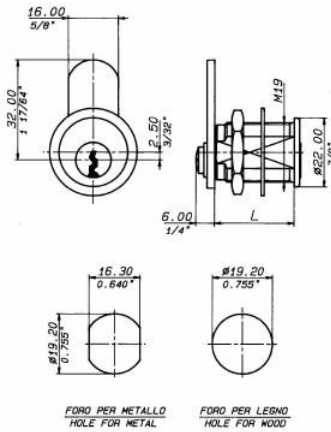
## ART.2151 Serrature da incasso per mobili



Rotazione 90° dx, 90° sx, 90°dx + 90° sx

| ART.             | Lunghezza cilindro mm. | Chiave | Finitura |
|------------------|------------------------|--------|----------|
| SE215116NI       | 16                     | KD     | Nichel   |
| SE215116NIK      | 16                     | KA     | Nichel   |
| SE215120NI       | 20                     | KD     | Nichel   |
| SE215120NIK      | 20                     | KA     | Nichel   |
| SE215125NI       | 25                     | KD     | Nichel   |
| SE215125NIK      | 25                     | KA     | Nichel   |
| SE215130NI       | 30                     | KD     | Nichel   |
| SE215120OT       | 20                     | KD     | Ottone   |
| SE215125OT       | 25                     | KD     | Ottone   |
| SE215125ZNI      | 25<br>zancato          | KD     | Nichel   |
| SE215125ZNI<br>K | 25<br>zancato          | KA     | Nichel   |

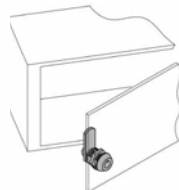
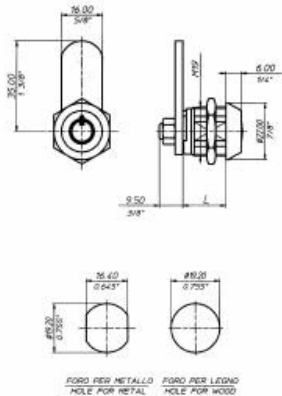
## ART.2251 Serrature da incasso per mobili



Rotazione 90° dx + 90° sx, 90° dx

| ART.            | Lunghezza cilindro mm. | Chiave | Finitura |
|-----------------|------------------------|--------|----------|
| SE225120NI      | 20                     | KD     | Nichel   |
| SE225125NI      | 25                     | KD     | Nichel   |
| SE225125NI<br>K | 25                     | KA     | Nichel   |
| SE225130NI<br>K | 30                     | KA     | Nichel   |
| SE225116OT      | 16                     | KD     | Ottone   |
| SE225120OT      | 20                     | KD     | Ottone   |
| SE225125OT      | 25                     | KD     | Ottone   |
| SE225130OT      | 30                     | KD     | Ottone   |

## ART.3351 serratura per ante



| ART.       | Profondità mm. | Finitura | Conf.PZ |
|------------|----------------|----------|---------|
| SE335121NI | 21             | Nichel   | 1       |
| SE335126NI | 26             | Nichel   | 1       |
| SE335131NI | 31             | Nichel   | 1       |

| STANDARD | L                          | 16 | 21              | 26               | 31                |
|----------|----------------------------|----|-----------------|------------------|-------------------|
|          | EFFETTIVA<br>ACTUAL LENGTH |    | 17.00<br>43/64" | 22.00<br>55/64"  | 27.00<br>1 1/16"  |
| MK       | L                          | 21 | 26              | 31               |                   |
|          | EFFETTIVA<br>ACTUAL LENGTH |    | 22.00<br>55/64" | 27.00<br>1 1/16" | 32.00<br>1 17/64" |